

# Multi-Award Winning CyberStore WSS Range

The Broadberry CyberStore Windows Storage Server range  
- "Best Storage Appliance" 2013



 Windows Storage Server 2012



## "FURIOUSLY FAST" Storage \*

Established in 1989 Broadberry Data Systems have powered the worlds largest organisations for over 23 years, ranging from the top 10 universities in England to NASA and CERN. We're a leading manufacturer of high-end custom rackmount servers, enterprise storage and high performance workstations.

Setting the standard for quality, reliability, and performance, Broadberry Data Systems provides the high-end computer user with the superiority and the dependability needed along with an affordable price. Every system is custom configured and built to order, ensuring customers only get the most up to date systems. Our goal is to develop and deliver the highest quality, proven, reliable and cost effective solutions to our customers through continuous product development and system design.

POWERING These organisations



\* Dave Mitchell (PC Pro)

LEARN MORE / CONFIGURE YOUR BROADBERRY CYBERSTORE WSS AT  
[broadberry.co.uk/storage-servers](http://broadberry.co.uk/storage-servers)

# Broadberry CyberStore WSS2012



Windows Storage Server 2012 is built on the Windows Server 2012 operating system to provide a powerful, reliable, and cost-effective platform for network-attached storage appliances.

Windows Storage Server 2012 is an advanced storage and file-serving solution for organizations of any size, and it offers new levels of performance and reliability on a proven and reliable server platform.

Windows Storage Server 2012 is built on the Windows Server 2012 operating system to provide a platform for network-attached storage appliances. Windows Storage Server 2012 network-attached storage appliances can help reduce storage costs associated with building modern datacenters and private clouds.

Windows Storage Server 2012 delivers excellent economics for a shared storage solution by gaining leverage from industry-standard hardware matched with robust storage capabilities. It delivers continuous availability that is designed to protect organizations from a range of failures and to help prevent downtime, and it offers organizations a scalable and reliable solution.

Microsoft partners offer specialized hardware and additional pre-configured software components to create storage appliances that are designed to take advantage of Windows Storage Server 2012 capabilities.

## WSS 2012 Innovations

Innovations in Windows Storage Server 2012 provide organizations with greater flexibility, availability, and reliability.

### Flexible Storage Options

Aside from addressing core file-serving requirements, Windows Storage Server 2012 offers file-based shared storage for applications such as Microsoft Hyper-V, Microsoft SQL Server, and Windows Server 2012 Internet Information Services (IIS). Organizations can more easily deploy, manage, and provision application storage as they would with their file shares. Because Windows Storage Server 2012 uses the Server Message Block 3.0 protocol, organizations can achieve high performance—similar to that of some storage area network (SAN) devices—

and high levels of availability on industry-standard hardware, to make file-based storage for server applications a powerful and cost-effective storage option. Windows Storage Server 2012 also includes support for the Network File System (NFS) file protocol and for a block storage option through the built-in Microsoft iSCSI Software Target

### Continuous availability

Windows Storage Server 2012 protects against a wide range of failures at different tiers of storage, network, and compute. Organizations of all sizes can benefit from higher levels of availability with transparent failover of applications and the ability to maintain clustered environments without service disruption.

### Performance and reliability

Because Windows Storage Server 2012 uses hardware offload and multiple redundant paths from the server to the storage, it can deliver Fibre Channel SAN-like performance with better throughput. In addition, Windows Storage Server 2012 includes capabilities such as online corruption repairs and storage pooling that can enhance reliability.

## WSS 2012 Editions

WSS 2012 Workgroup	WSS 2012 Standard
As many as 50 connections	No license limit on number of connections
Single processor socket	Multiple processor sockets
Up to 32 GB of memory	No license limit on memory
As many as 6 disks (no external SAS)	No license limit on number of disks
	Deduplication, virtualisation, and networking services
	Failover clustering for higher availability
	Microsoft BranchCache for reduced WAN traffic

## TOP 15 FEATURES of the CyberStore WSS Range

**1. SMB 3.0:** Support for RDMA network adapters, SMB multichannel, and SMB scale-out file servers allow for manageable and scalable active/active file shares. New SMB 3.0 innovations will enable many new scenarios; our favourite is taking an existing Fibre Channel SAN and sharing out the storage over SMB 3.0. This configuration is known as "a gateway to a SAN" and it is a great way to extend your storage investments to other application servers without running Fibre.

**2. NFSv2, NFSv3, and NFSv4.1:** Fantastic NFS support with performance and resiliency gains. In addition to bringing Continuous Availability for NFSv3, the new NFS 4.1 Server support provides a state-full connection with more security, less network chatter, and it is very WAN friendly.

**3. Continuous Availability** for SMB 3.0, NFSv3 and iSCSI Software Target when running in a failover cluster. Client users and application servers never notice that a node has failed and their session handles have automatically reconnected in the event of a server malfunction.

**4. Data Deduplication:** Massively reduce primary storage footprint requirements on NTFS data volumes. 2:1 savings are common for a general file share and up to 20:1 for VHD libraries. You will save so much disk space that you will have to think about what to do with it all.

**5. Storage Spaces:** Create reliable storage pools using just a bunch of standard SAS or SATA disks and no hardware RAID controller. Storage Spaces in Windows Server 2012 enables cost-effective, optimally used, highly available, scalable, and flexible storage solutions for business-critical (virtual or physical) deployments.

**6. Thin Provisioning:** Allows storage pools to pretend they are big and grow as you need them. Windows Server 2012 now supports just-in-time allocations (also known as thin provisioning) and the ability to reclaim storage that is no longer needed (also known as trim).

**7. Fast Disk Error Recovery (Chkdsk):** Scanning drives can be done online now, making CHKDSK run in seconds instead of hours. This reduces

potential risks associated with deploying high-capacity volumes.

**8. PowerShell Cmdlets:** There are a ton of new scripts and cmdlets to enable you to automate storage provisioning and you can do it all from the beach on a remote connection. J

**9. Server Manager:** Server Manager now provides new ways to manage your storage environment including a single 'pane of glass' experience for storage and file services on standalone and clustered servers. Create storage pools and easily allocate capacity with appropriate resiliency and performance. This brings a consistent storage management experience when configuring Windows Storage Spaces or hardware RAID subsystems.

**10. iSCSI Software Target:** Now available in Server Manager, quickly create and share iSCSI LUNs over the network to heterogeneous application servers that run an iSCSI Initiator.

**11. Cluster-Aware Updating (CAU):** Enables secure, coordinated patching for all nodes of a cluster. CAU automates the software updating process on clustered servers while maintaining availability.

**12. Central Access Policies:** Imagine setting a file-access policy that mirrored your exact intent, such as "allow access by the finance team, if document contains Confidential then only allow access by full-time employees."

**13. Network adapter teaming:** Team network adapters together to increase network performance and availability, regardless of which vendor or make the adapters are and do so independent of any third-party driver requirement.

**14. Online Backup:** With just a few clicks, Administrators can enable online backups to Windows Azure or other cloud providers that have registered an agent in the Windows Server Backup.



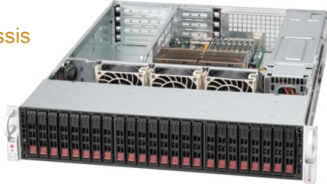
# CYBERSTORE WSS Product Range

Our massive range of configurable server and storage options means we've always got the right solution for you

## CyberStore 224S WSS

Upto 24TB in a Low-Power 2U Chassis

- 24 x SFF 2.5" SAS/SATA/SSD Drive Bays
- Intel® Xeon® Processor-based
- Ultra low Power Storage
- Available as DAS, iSCSI SAN, NAS or Fibre
- Upto to 10 Gb LAN Ports & 10GbE Options



## CyberStore 316S WSS

Upto 96TB in a 4U Chassis

- 16 x 3.5" SAS/SATA/SSD Drives Bays
- Intel® Xeon® Processor-based
- Available as DAS, iSCSI SAN, NAS or Fibre
- Upto to 8 Gb LAN Ports & 10GbE Options
- Daisy Chain Multiple Storage Arrays



## CyberStore 424S WSS

Upto 96TB in a 4U Chassis

- 24x 3.5" SAS/SATA/SSD Drives Bays
- Intel® Xeon® Processor-based
- Available as DAS, iSCSI SAN, NAS or Fibre
- Upto to 8 Gb LAN Ports & 10GbE Options
- Daisy Chain Multiple Storage Arrays



## CyberStore 436S WSS

Upto 144TB in a 4U Chassis

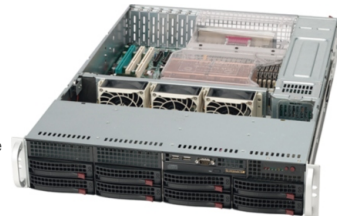
- 36 x 3.5" SAS/SATA Drive Bays
- Intel® Xeon® Processor-based
- Available as DAS, iSCSI SAN, NAS or Fibre
- Upto to 10 Gb LAN Ports & 10GbE Options
- Daisy Chain Multiple Storage Arrays



## CyberStore 208S WSS

Upto 32TB in a 2U Chassis

- 8 x 3.5" SAS/SATA/SSD Drives Bays
- Intel® Xeon® Processor-based
- Available as DAS, iSCSI SAN, NAS or Fibre
- Upto to 8 Gb LAN Ports & 10GbE Options
- Daisy Chain Multiple Storage Arrays



## CyberStore 472S WSS

Upto 72TB in a 4U Chassis

- 72x 2.5" SAS/SATA/SSD Drives Bays
- Intel® Xeon® Processor-based
- Available as DAS, iSCSI SAN, NAS or Fibre
- Upto to 8 Gb LAN Ports & 10GbE Options
- Daisy Chain Multiple Storage Arrays



## CyberStore 445S WSS

Upto 108TB in a 4U Chassis

- 45 x 3.5" SAS/SATA/SSD Drives Bays
- Intel® Xeon® Processor-based
- Daisy Chain Multiple Storage Arrays
- JBOD - Direct Attached Storage Unit



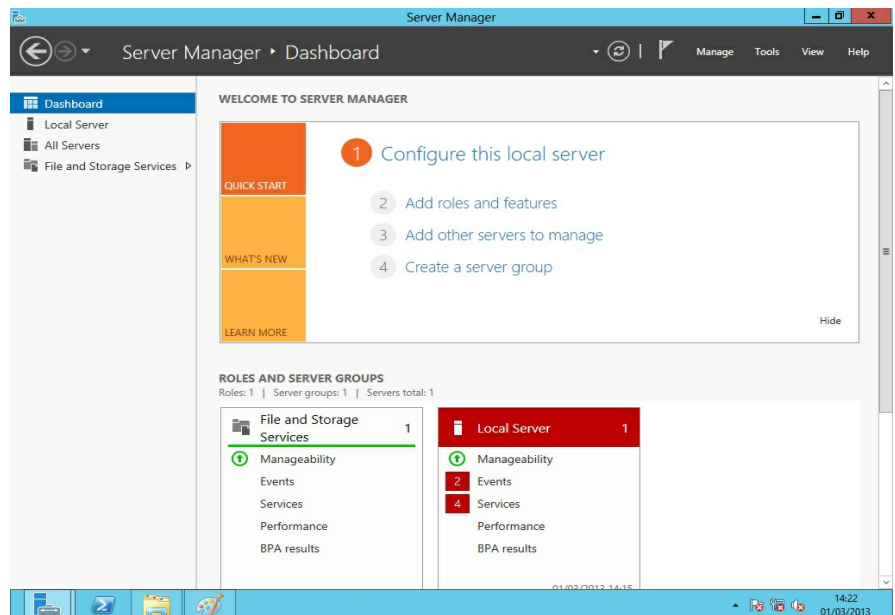
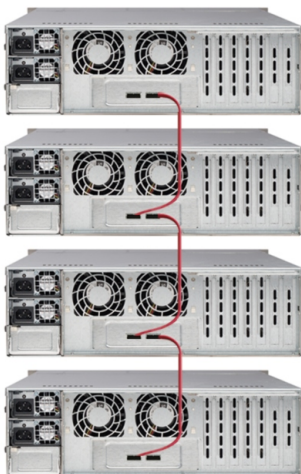
## CyberStore 108S WSS

Upto 8TB in a 1U Chassis

- 8 x 2.5" SAS/SATA Drive Bays
- Intel® Xeon® Processor-based
- Available as DAS, iSCSI SAN, NAS or Fibre
- Upto to 10 Gb LAN Ports & 10GbE Options
- Daisy Chain Multiple Storage Arrays



### DAISY CHAIN EXPANSION AVAILABLE ON ALL SYSTEMS



## TRUSTED by the World's Biggest Brands

We have established ourselves as one of the biggest storage providers in the UK, and since 1989 been trusted as the preferred supplier of storage servers to some of the world's biggest brands, including:



## MULTI Award Winning

Our servers and storage are increasingly being recognised as market-leading solutions.

Since 2009 our CyberServe range of rack servers and CyberStore range of storage appliances have repeatedly been selected as the best buy available on the market, beating competition such as DELL and HP.



CALL US NOW ON

# 020 8997 6000